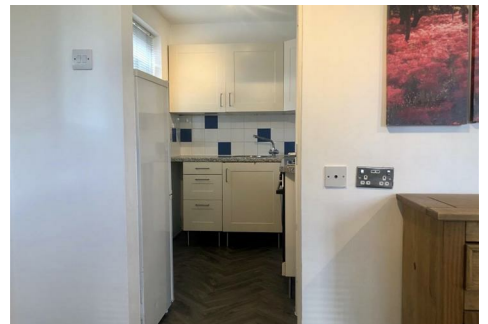




MATTHEW JAMES
Property Services



26 Ebourne Close, Kenilworth, CV8 2QG
£695 Per Calendar Month

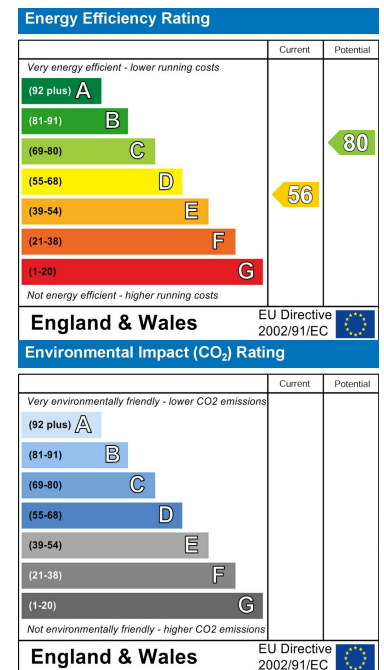
AVAILABLE NOW..... STUDIO FLAT..... KENILWORTH LOCATION..... A quirky studio located in the popular area of Kenilworth, Warwickshire. Briefly comprising of lounge/bedroom, fully fitted kitchen with appliances, bathroom with shower cubicle, electric heating and comes with a parking space.....

Floor Plan

Area Map



Energy Efficiency Graph



These particulars, whilst believed to be accurate are set out as a general outline only for guidance and do not constitute any part of an offer or contract. Intending purchasers should not rely on them as statements of representation of fact, but must satisfy themselves by inspection or otherwise as to their accuracy. No person in this firm's employment has the authority to make or give any representation or warranty in respect of the property.

CONTACT INFORMATION

24a Warwick Row, Coventry CV1 1EY

02477 170170

info@matthewjames.uk.com

www.matthewjames.uk.com

Facebook

Twitter